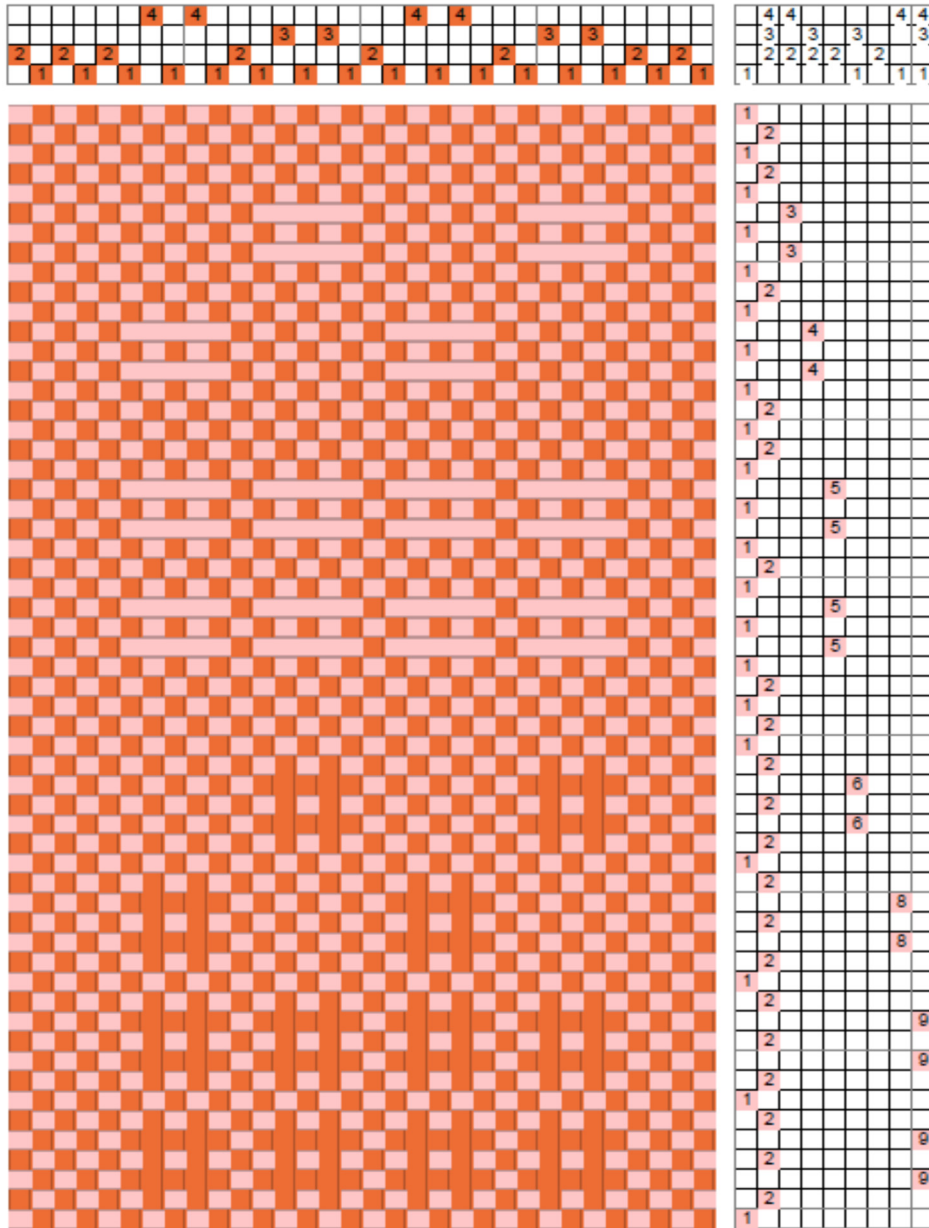


# Lace Bronson



Lace Bronson, also called Bronson Lace or Atwater-Bronson lace, is a unit or group weave with two blocks on four shafts; it has the characteristic that while a block weaves weft floats, the other block can also weave weft floats or plain weave. This works because there is a warp end separating the two blocks. Warp or weft floats can be woven on one side of the fabric, while the alternate floats appear on the other side. See drawdown on the left.

The fabric on the right is an example with one block weaving floats while the other weaves plain weave. The two sides of the cloth are shown. The weft floats on the near right appear as warp floats on the other side of the cloth, shown on the far right.

When weaving Lace Bronson, note that every other thread is on shaft 1 – check to make sure there are enough heddles before threading!

